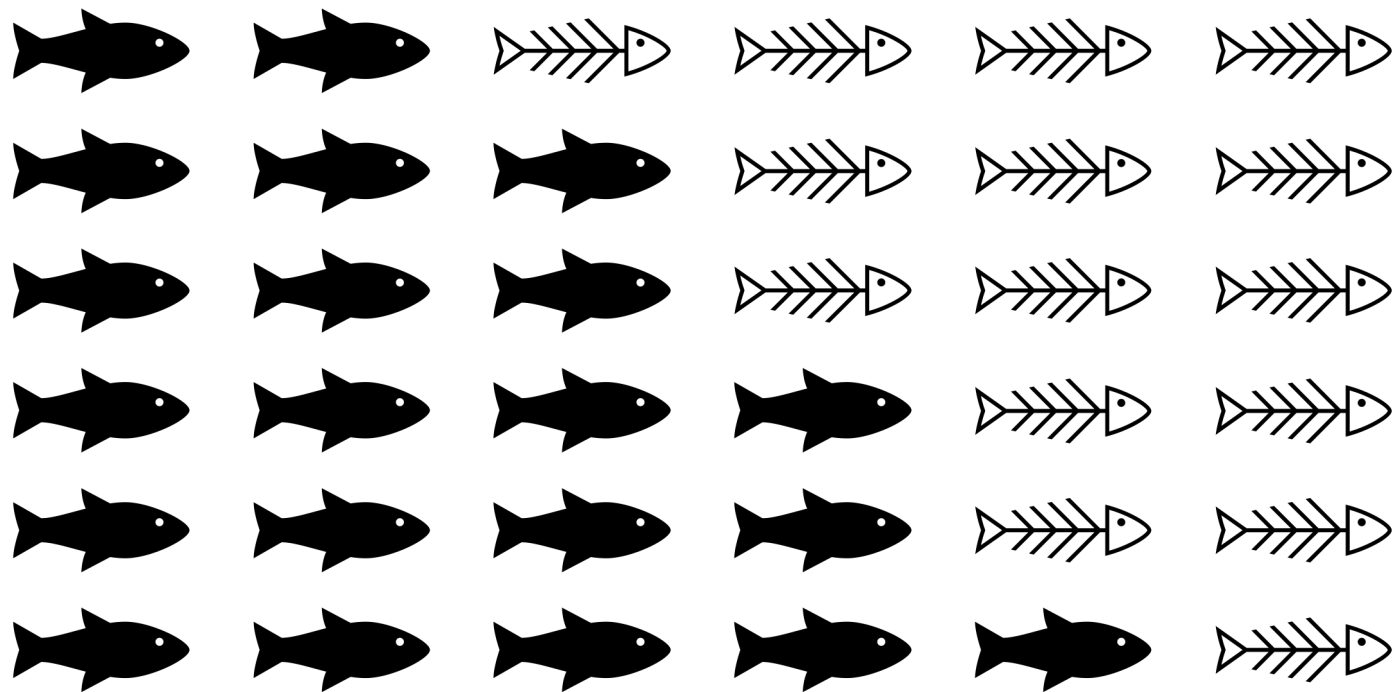


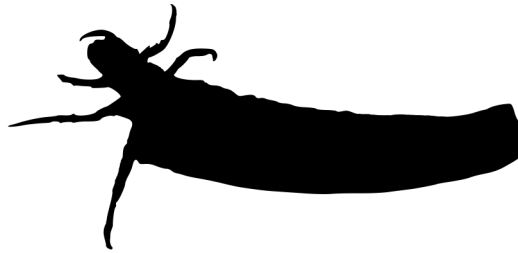
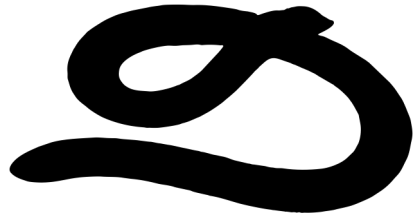
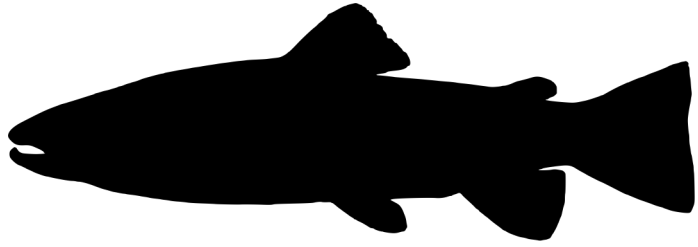
Branching out into Ecotoxicology

Iain Moodie & Stephen De Lisle

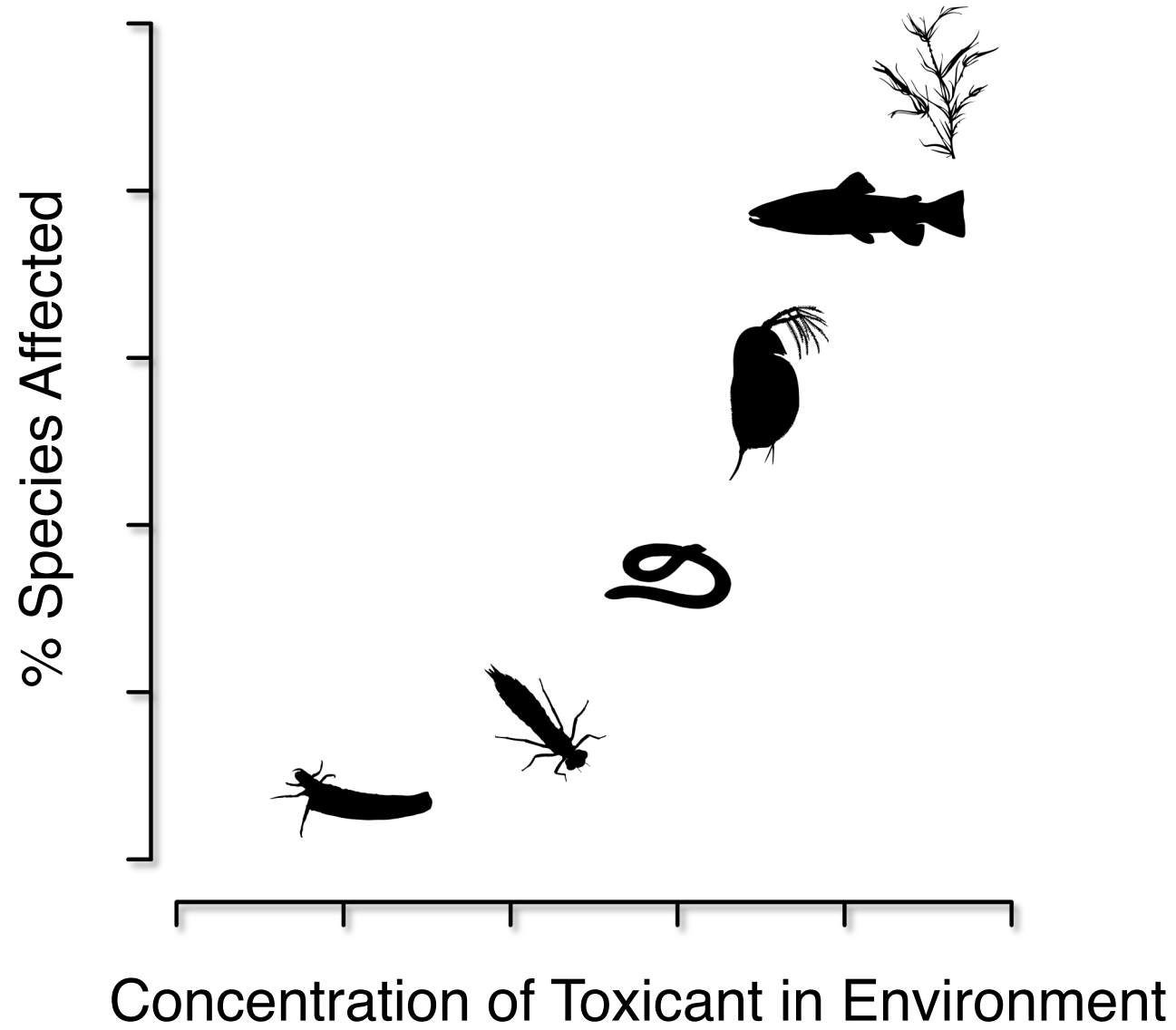
What is the **safe** amount of a toxicant in the environment?

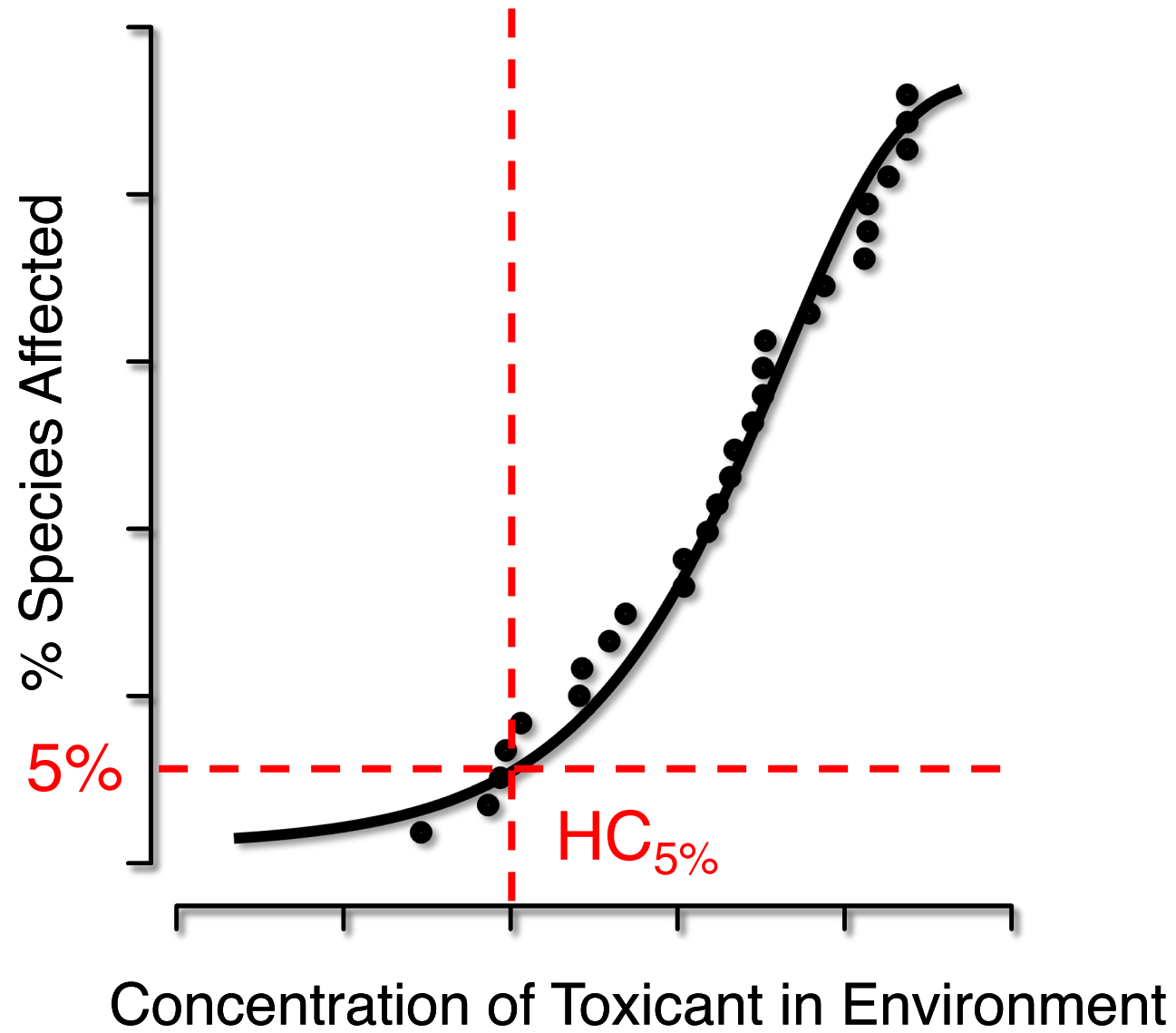


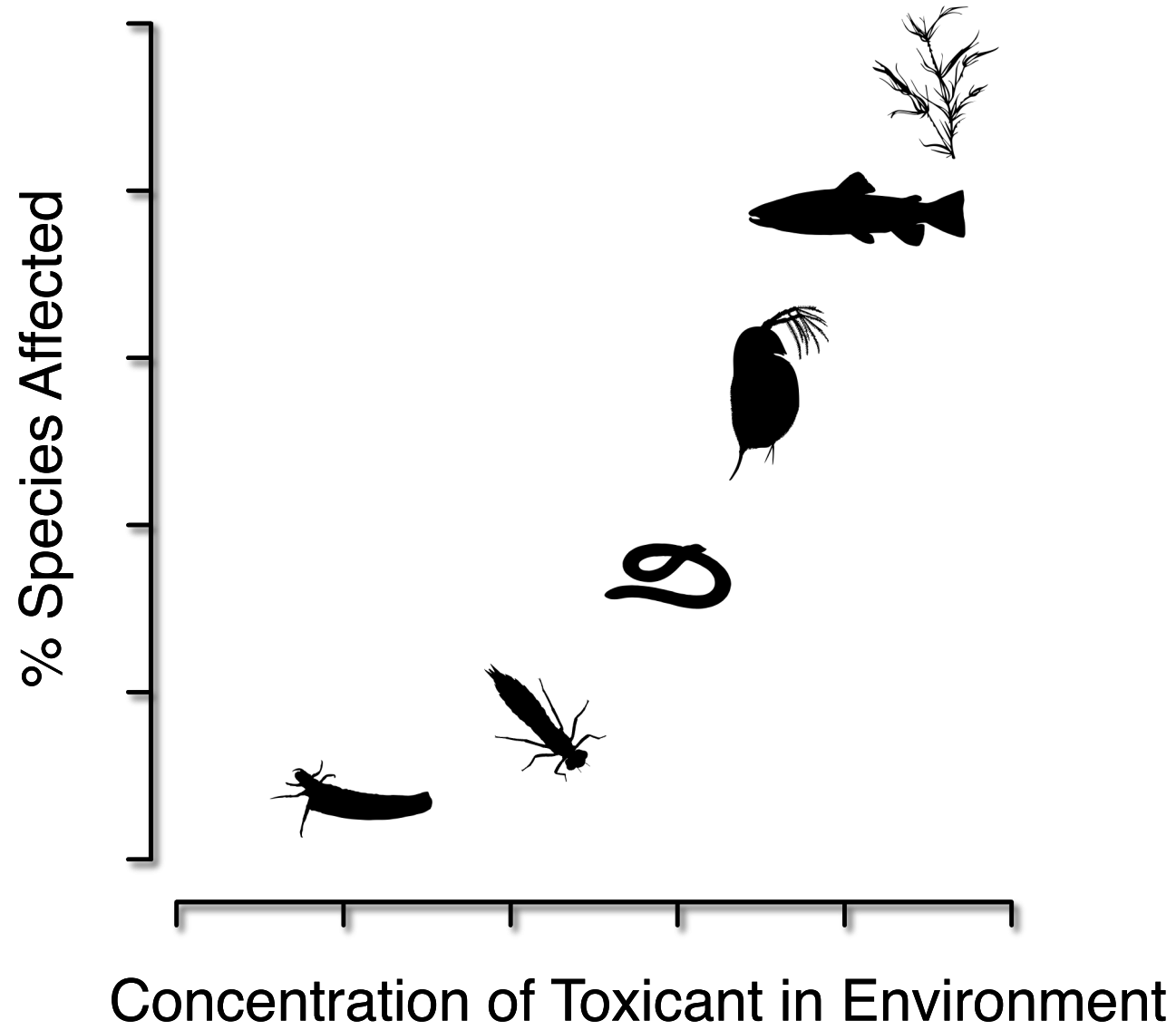
Concentration of Toxicant

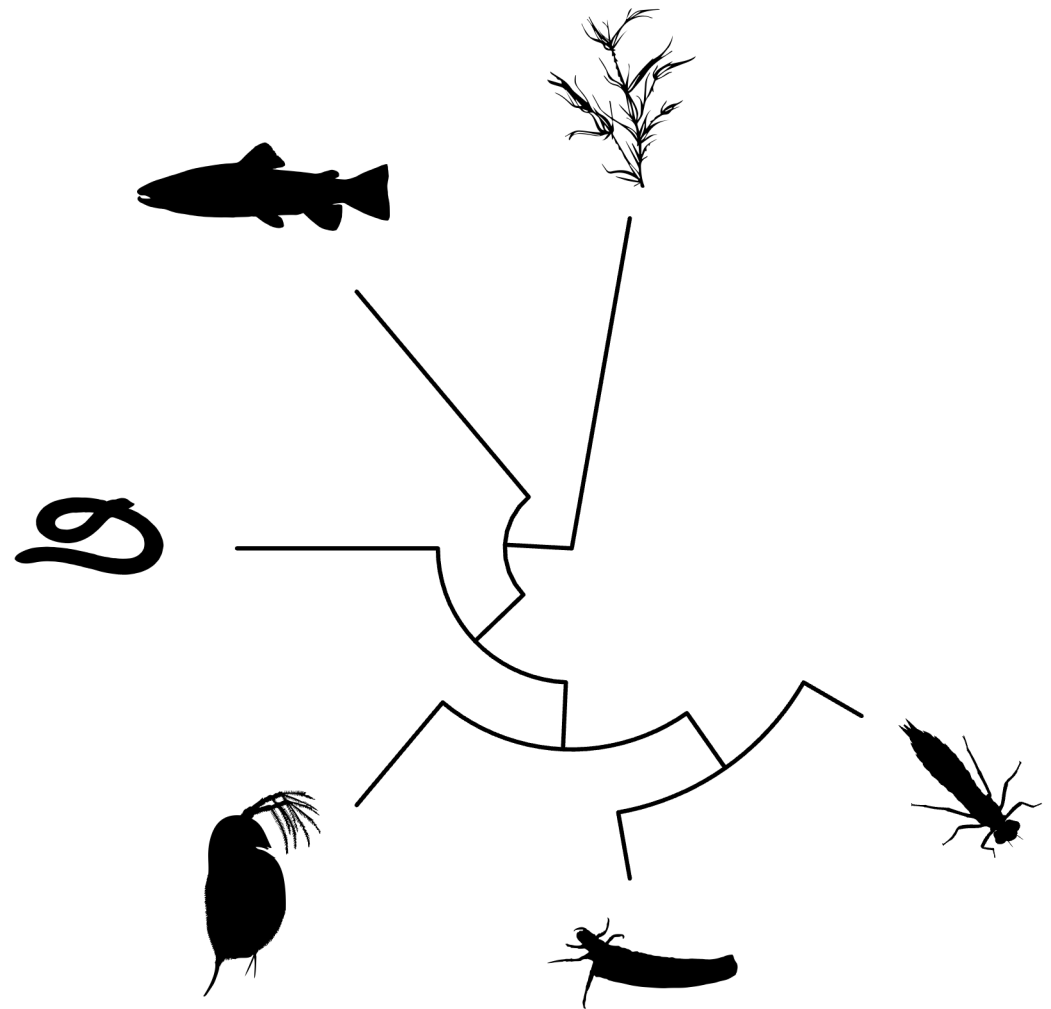


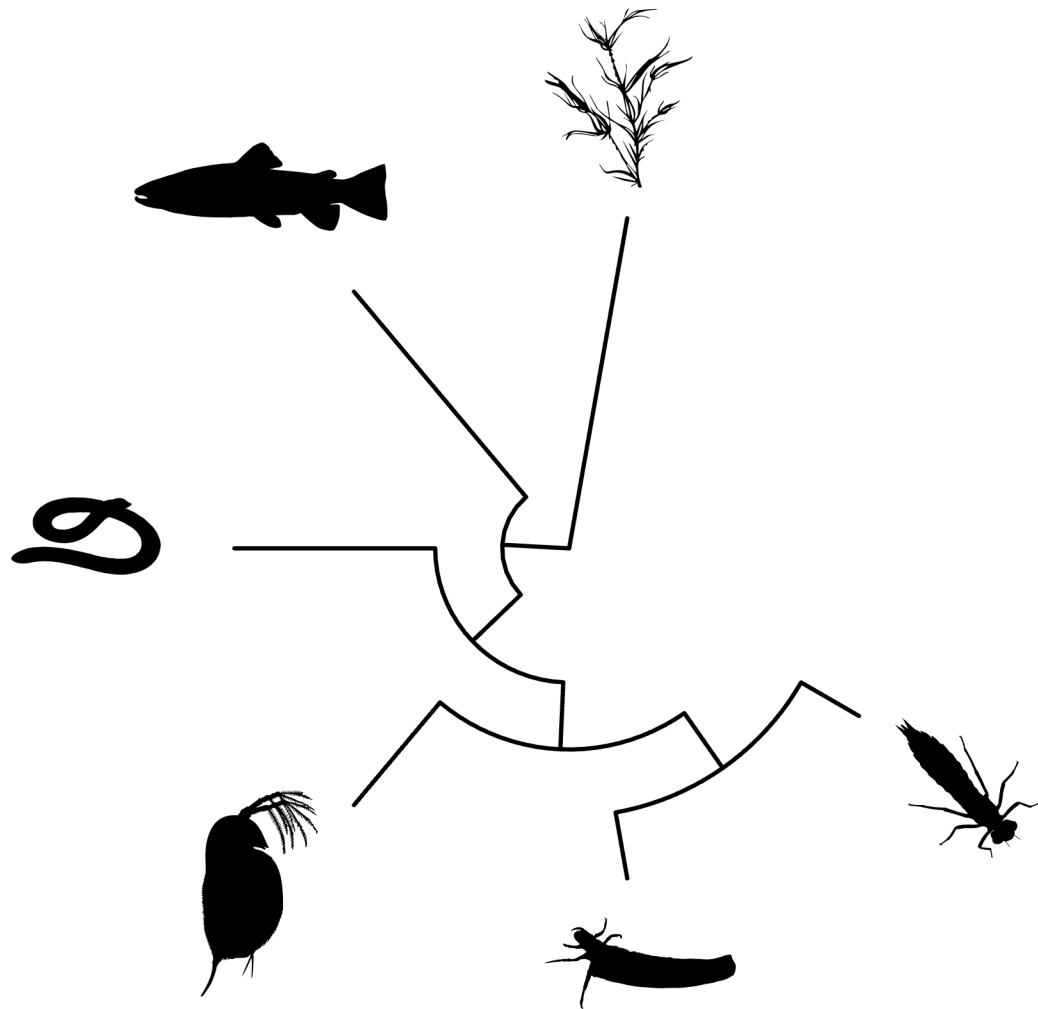
*Not to scale (thankfully)



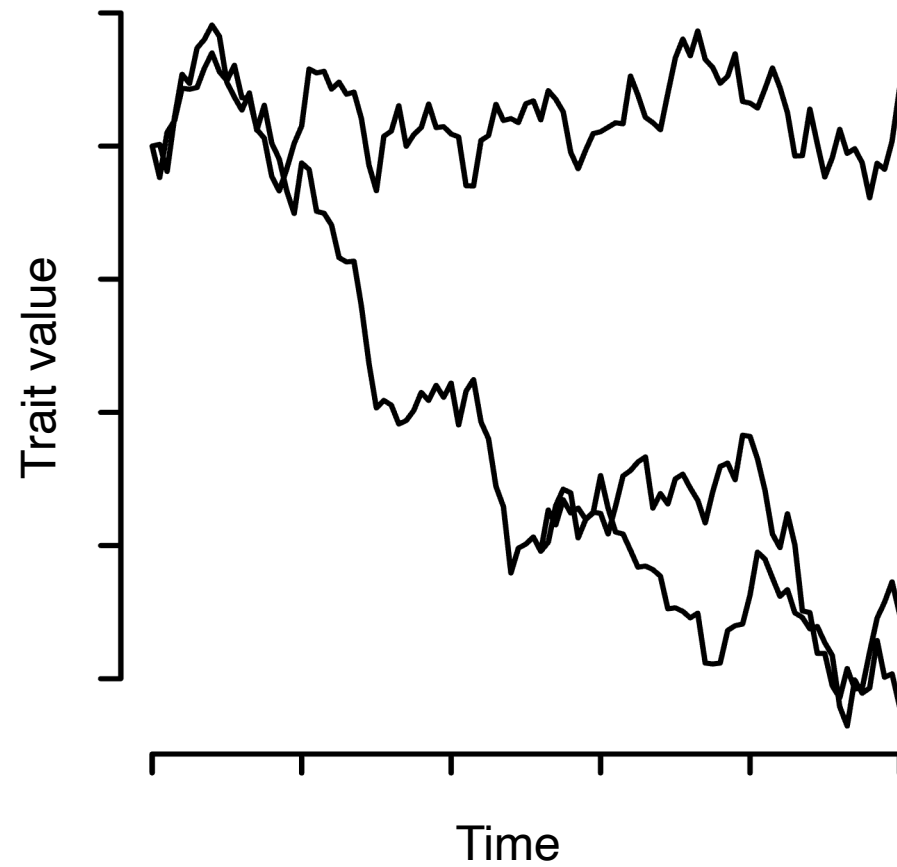


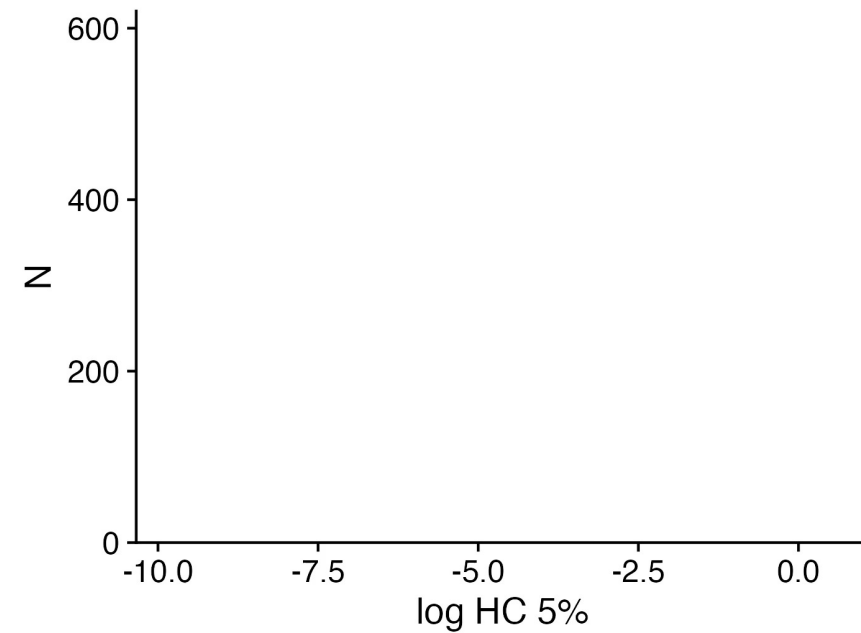
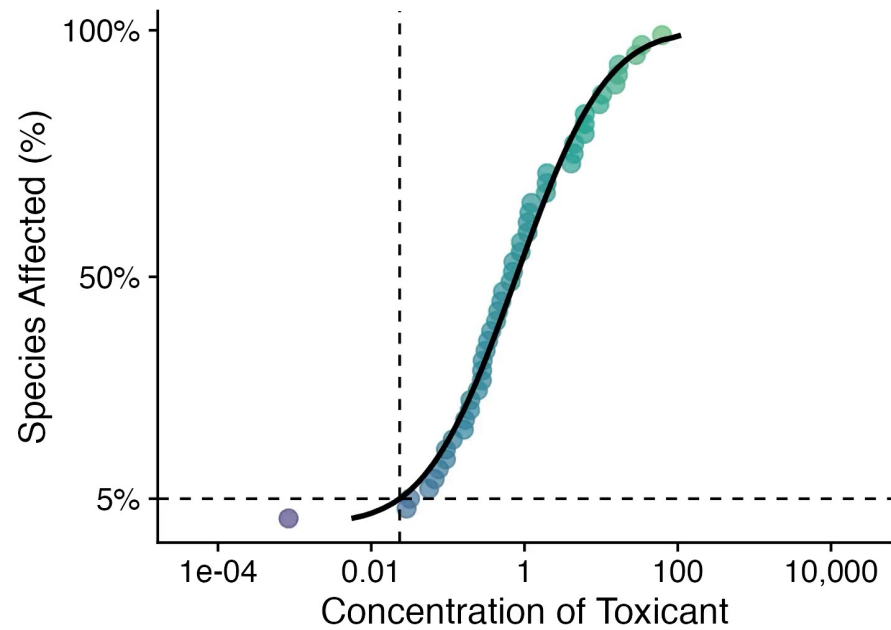
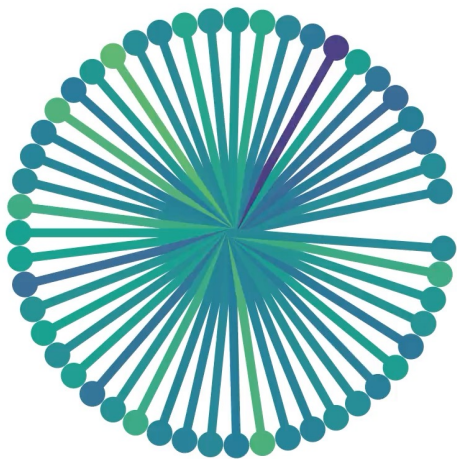
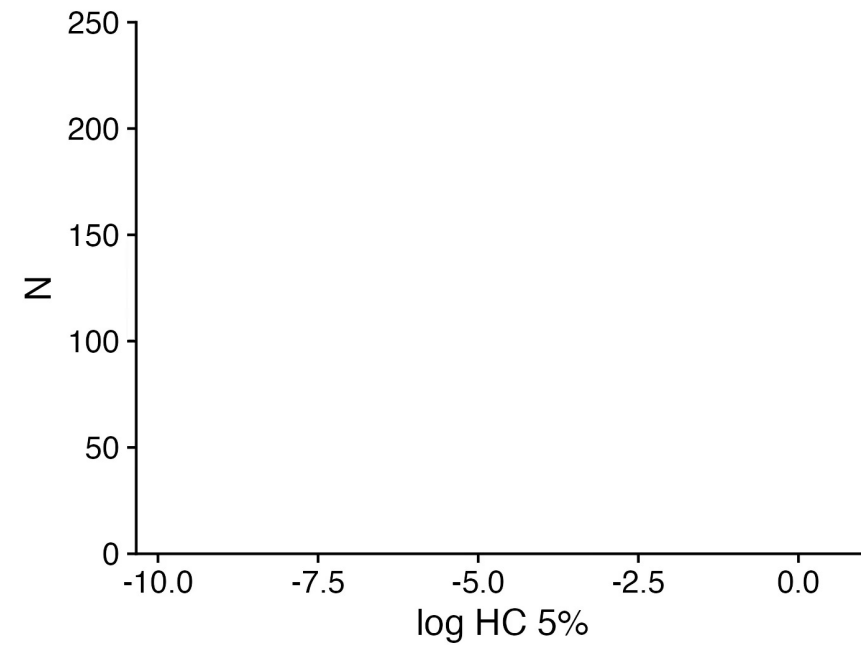
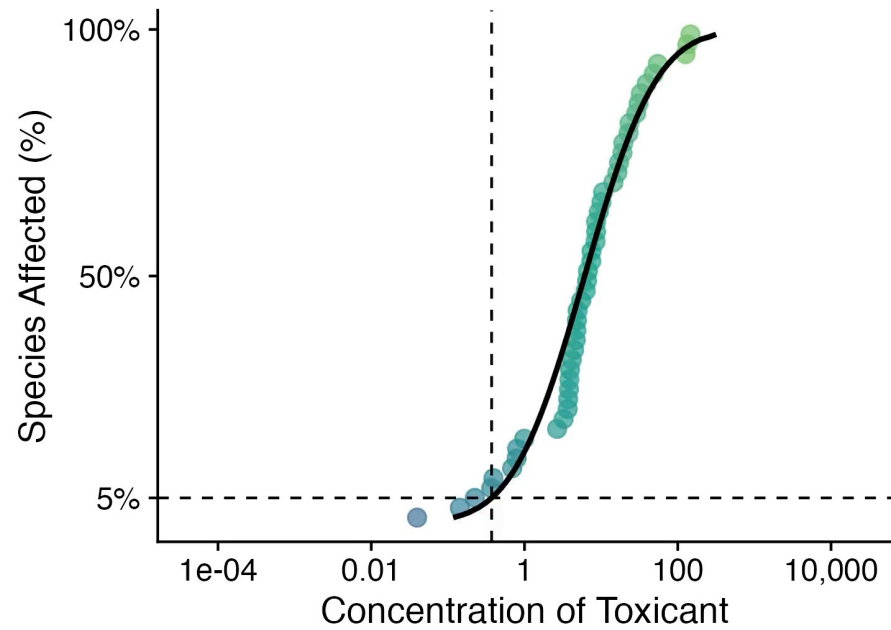


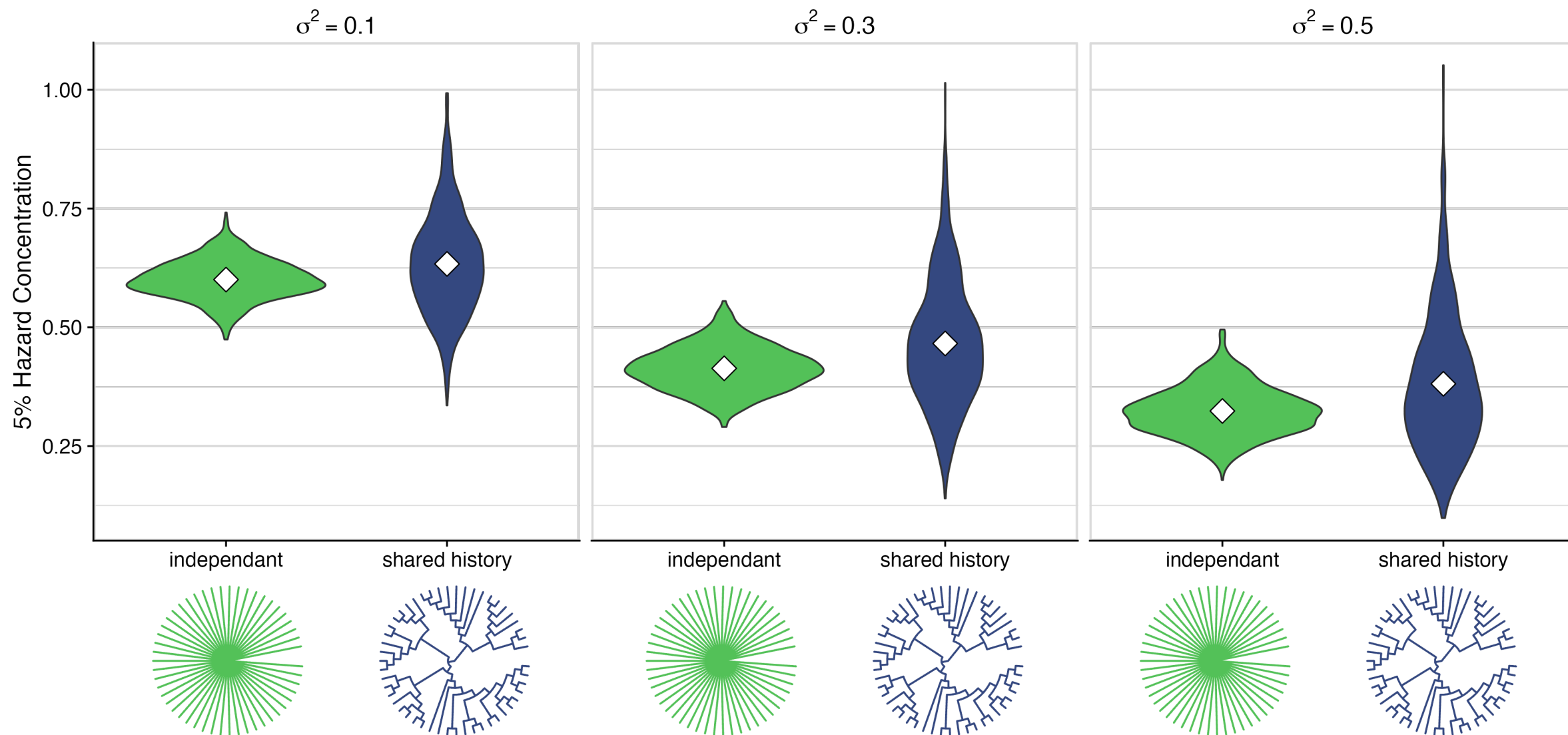


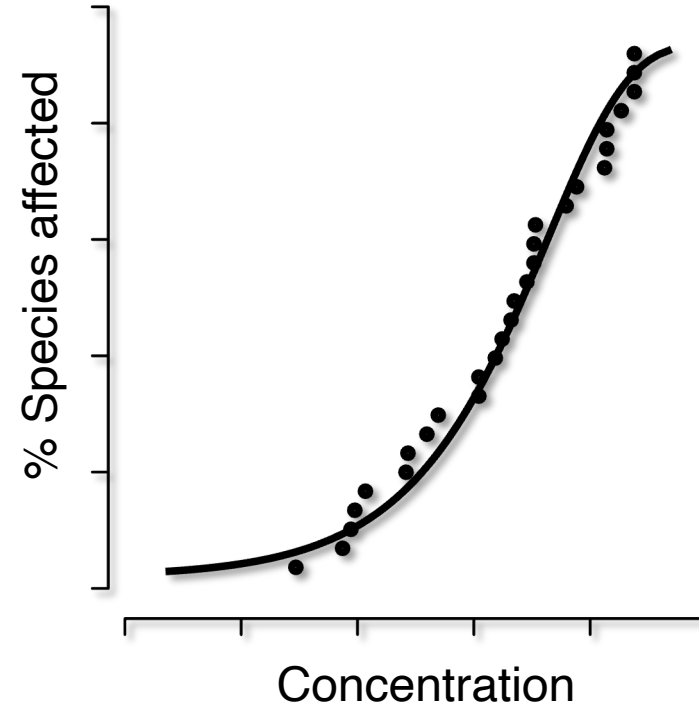
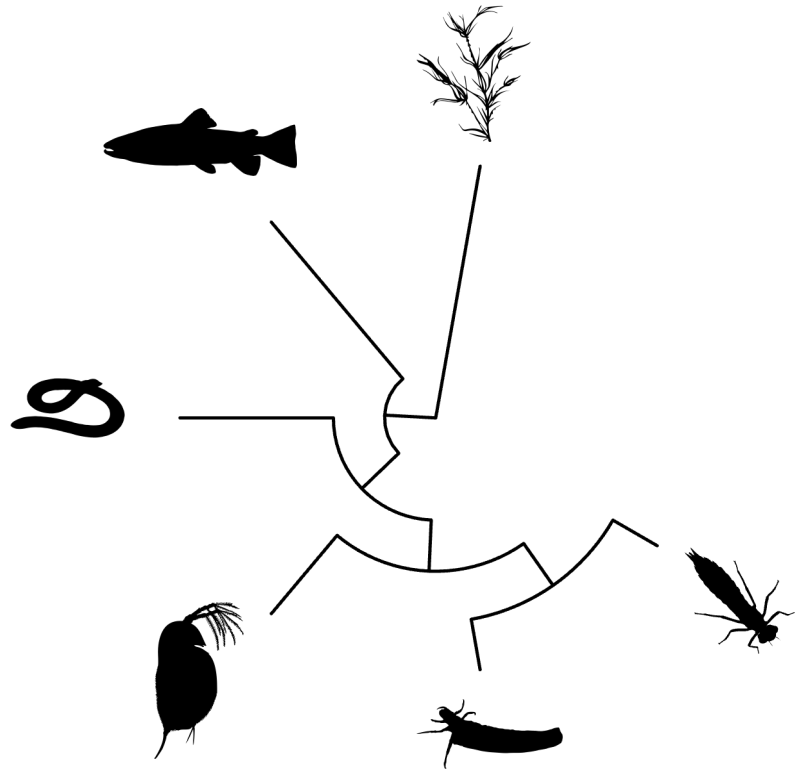


$$dX(t) = \sigma dW(t)$$









God Jul!



Iain Moodie



Stephen De Lisle

FORMAS 